

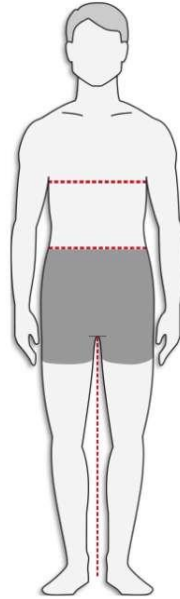
# Carhartt Size Chart & Fit Guide



Carhartt – Men’s Body Measurements (All except non-FR Bib Overalls, Biberalls & Coveralls)

In Inches	Small	Medium	Large	XL	2XL	3XL	4XL	5XL
Chest	34"-36"	38"-40"	42"-44"	46"-48"	50"-52"	54"-56"	58"-60"	62"-64"
Waist	28"-30"	32"-34"	36"-38"	40"-42"	44"-46"	48"-50"	52"-54"	56"-58"
Hip(Seat)	34"-36"	38"-40"	42"-44"	46"-48"	50"-52"	54"-56"	58"-60"	62"-64"

*Note: If your measurement falls between sizes, buy the larger size up.*



## How to Measure

### Chest:

- Measure just under arms and across shoulder blades holding the tape firm and level. If your chest falls between sizes, order the next size up.

### Waist:

- Measure around your waistline, keeping the tape comfortably loose.

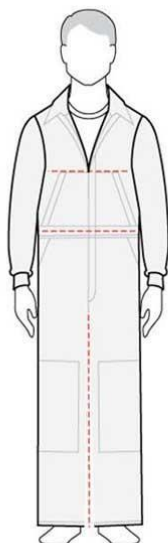
### Inseam:

- Measure pants that fit you well. Lay them flat, with the front and back creased smooth. Measure along the inseam from crotch to bottom of leg hem. Or, if you don't have pants that fit comfortably, measure from your crotch to your desired pant length.

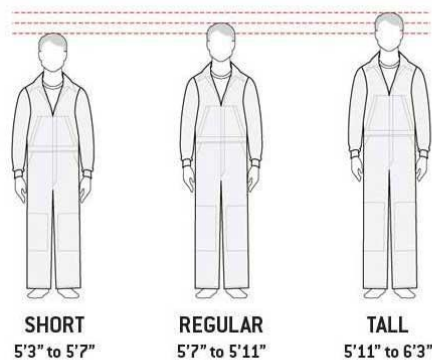
**FOR BEST RESULTS, MEASURE OVER YOUR UNDERGARMENTS**

## Carhartt - Men's Bib Overalls, Biberalls & Coveralls Sizing Chart

In Inches	Small	Medium	Large	X-Large	2XL	3XL	4XL
Chest	34" - 36"	38" - 40"	42" - 44"	46" - 48"	50" - 52"	54" - 56"	58" - 60"
Waist	28" - 30"	32" - 34"	36" - 38"	40" - 42"	44" - 46"	48" - 50"	52" - 54"



### Height Chart



#### How to Measure

- Measure both chest and waist. Then use the larger of the two measurements to determine your coverall size.
- If your chest or waist measurement falls between sizes, pick the next size up.
- Measurements assume coveralls are worn over other clothing.
- Reference the height chart (above) for guidance.

#### Differences in Coverall Sizing

Outerwear, long-sleeve shirts and sweats in tall sizes: 2" longer in the torso than regular sizes. 2" longer in the sleeve than regular sizes.

#### Short-sleeve shirts in tall sizes:

- 2" longer in the torso than regular sizes. ½" longer in the sleeve than regular sizes.

#### Coveralls in tall sizes:

- 1" longer in the torso than regular sizes. 1" longer than in the sleeve length than regular sizes. Tall sizes in the X06 measure 2" longer in both the torso and sleeve length.

#### Coveralls in short sizes:

- 1" shorter in the sleeve than regular sizes.

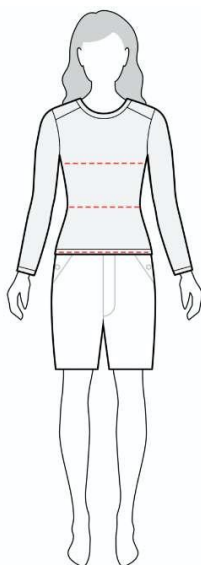
# Carhartt Size Chart & Fit Guide



## Carhartt – Women’s Shirts and Sweatshirts

	Bust	Waist	Hip (Seat)
X-SMALL (0 – 2)	33"	27"	36"
SMALL (4 – 6)	34" – 35"	28" – 29"	37" – 38"
MEDIUM (8 – 10)	36" – 37"	30" – 31"	39" – 40"
LARGE (12 – 14)	38½" - 40"	32½" - 34"	41½" - 43"
XL (16 – 18)	41½" - 43½"	35¾" - 38"	44½" - 46½"
2XL (20)	45½" - 47½"	40¼" - 42½"	48½" - 50½"
1X PLUS (16 – 18)	44" – 46"	38¾" - 40¾"	46½" - 48½"
2X PLUS (20 – 22)	48" – 50"	42¾" - 44¾"	50½" - 52½"
3X PLUS (24 – 26)	52" – 54"	46¾" - 48¾"	54½" - 56½"

*Units are expressed in inches and reflect general body dimensions. Measurements are approximate.*



**How to Measure**

### Hips:

- Measure the fullest part of your hips, approximately 8" below the natural waist.

### Chest:

- Measure just under arms and across shoulder blades holding the tape firm and level. If your chest falls between sizes, order the next size up. **Note:** It may not be the smallest point.

### Natural Waist:

- Bend side to side and find the natural bend in your body; this is your natural waist.

# Carhartt Size Chart & Fit Guide



## Carhartt – Hats Sizing Chart

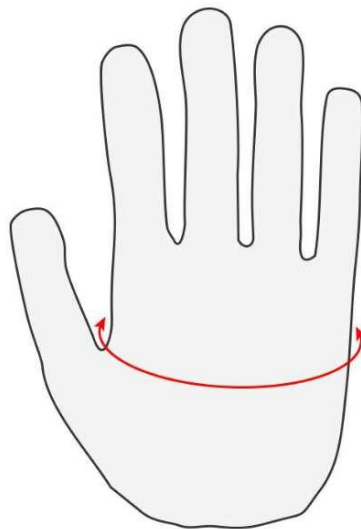
	Men	Women
Hat Measurement	7.0" – 7 1/4"	7 3/4" – 8"
Head Measurement	22" – 22 3/4"	23 1/4" - 23 3/4"

Units are expressed in inches and reflect general body dimensions. Measurements are approximate.

## Carhartt - Gloves Sizing Chart

	Men	Women	Juniors	Toddler
X-Small	----	----	4"	3 1/2"
Small	7 1/2" - 8"	6 1/2"	4 1/2"	4"
Medium	8 1/2"	7"	5"	4 1/2"
Large	9" - 9 1/2"	7 1/2"	5 1/2"	5"
X-Large	10" - 10 1/2"	----	6"	5 1/2"
2x-Large	11" - 12"	----	----	----

Units are expressed in inches and reflect general body dimensions. Measurements are approximate.



**How to Measure Hand Circumference:** Flat, from the crook of thumb around outer edge of palm.